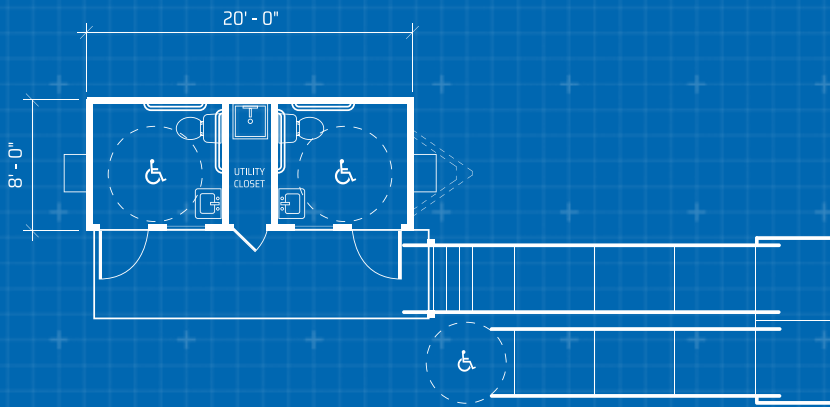


20' x 8' TOILET TRAILER



Our 20' x 8' toilet trailers are great for smaller jobs. They are divided into two separate private units, each equipped with a sink. These units are perfect for events and construction sites alike.



CUSTOMIZATION

- Steps & Ramps
- Site Services
- Protection Plans

Dimensions

20' Long
8' Wide
8' Ceiling height

Exterior Finish

Aluminum or wood siding
I-Beam Frame
Standard drip rail gutters

Interior Finish

Gypsum ceiling or T-grid suspended ceiling
Paneled walls
Vinyl tile floor

Electric

Fluorescent ceiling lights
Breaker panel

Heating/Cooling

Central HVAC or thru-wall AC

Windows/Doors

Horizontal or vertical slider windows
(2) Vision panel doors with standard locks or (2) steel doors with dead bolt locks

Optional Services

Holding tank
Water tank

** Photos are representational; actual products vary. Additional floor plans and specifications may vary from those shown and are subject to in-stock availability*